

Hornbeam Drive



- Available TO LET from March 1st
- Sought after 'Tall Trees' development



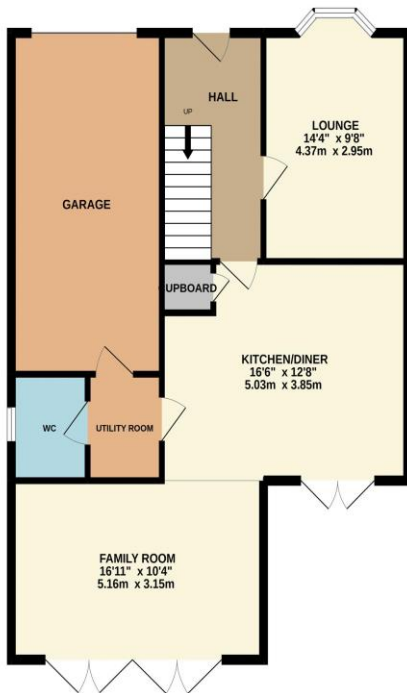
Multi-Award Wining



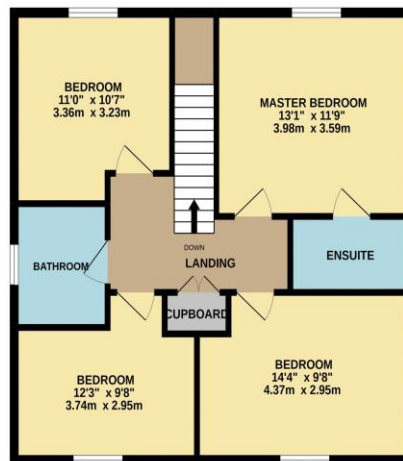
Available 'TO LET' from March 1st, early viewing is advised when it comes to this spacious, impressive and modern, four bedroom family property, built by 'Avant' homes, to their 'Rosebury' design and boasting all of the style and quality that has become synonymous with the name. Located on a corner plot, within the very much sought after, 'Tall Trees' development.

Stylish throughout, the accommodation comprises an entrance hall, lounge, spacious kitchen/diner with utility and cloakroom/WC off, and generous family/garden room with feature bi-fold doors to the ground floor. The first floor delivers four good bedrooms, 'Master' with superb en-suite and equally impressive, separate family bathroom. The pleasant corner situation enjoys a generous block paved drive, garage, front garden and attractive, enclosed rear garden.

GROUND FLOOR
867 sq.ft. (80.6 sq.m.) approx.



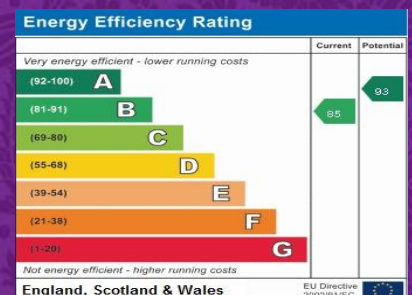
1ST FLOOR
688 sq.ft. (63.9 sq.m.) approx.



TOTAL FLOOR AREA: 1555 sq.ft. (144.4 sq.m.) approx.

Whilst every attempt has been made to ensure the accuracy of the floorplan contained here, measurements of doors, windows, rooms and any other items are approximate and no responsibility is taken for any error, omission or mis-statement. This plan is for illustrative purposes only and should be used as such by any prospective purchaser. The services, systems and appliances shown have not been tested and no guarantee as to their operability or efficiency can be given.
Made with Mempro ©2022

- Stylish and spacious throughout
- Attractive corner position



“The Property Experts”



www.ingleby-homes.co.uk

01642 671025

**INGLEBY
HOMES**
SALES & LETTINGS

AGENTS NOTE: Every care has been taken with the preparation of these details, but they are for general guidance only. Measurements and dimensions are approximate, and any fixtures or fittings shown in photography does not infer that they are to be included within the sale. The agent has not tested any appliances or supplies and professional verification of these should be sought prior to purchase if required. These particulars do not constitute a contract or part of a contract.